

| REV. | DESCRIPTION | REVISOR | DATE | APPROVE |
|------|-------------|---------|----------|---------|
| 0 | | MH | 01.16.12 | CH |

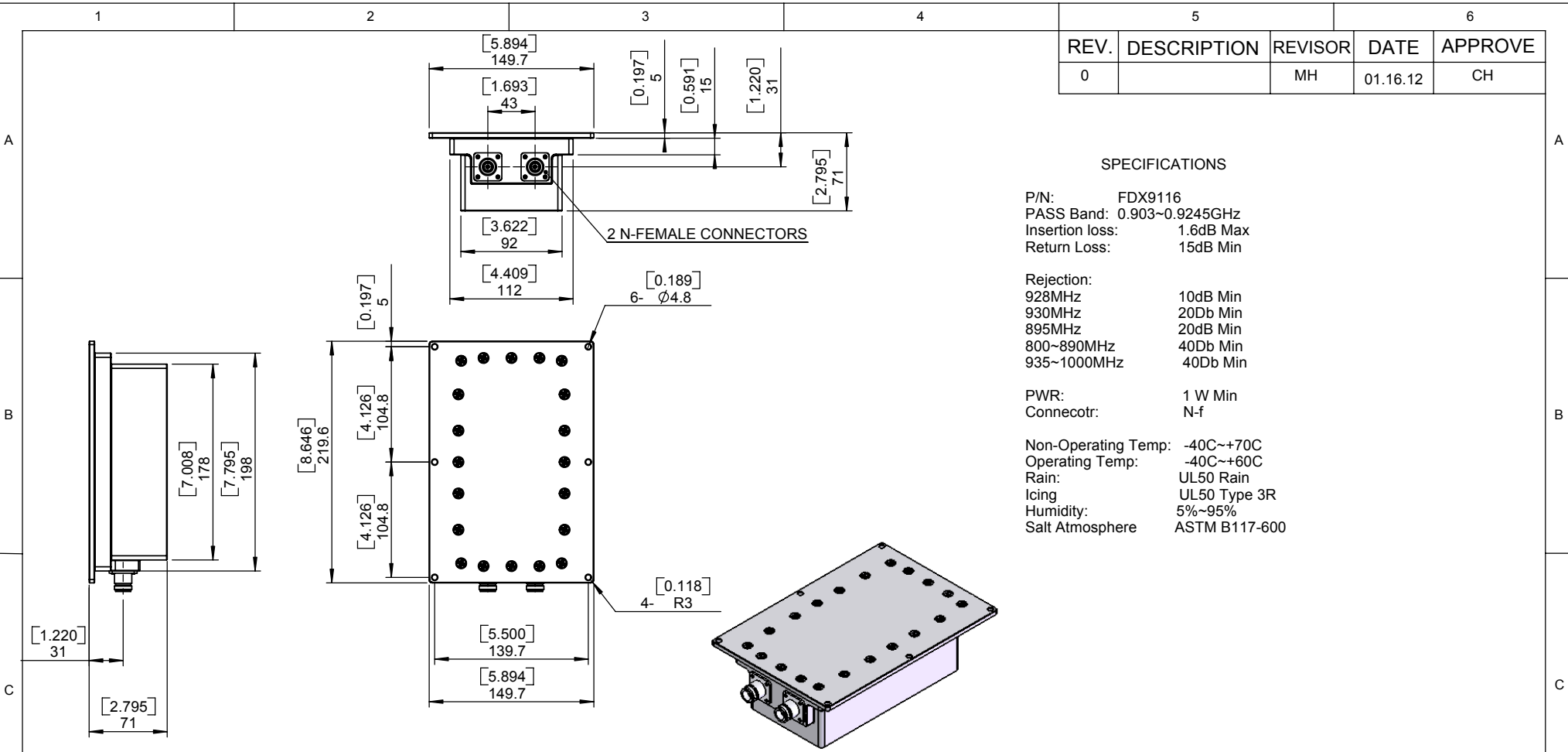
SPECIFICATIONS

P/N: FDX9116
 PASS Band: 0.903~0.9245GHz
 Insertion loss: 1.6dB Max
 Return Loss: 15dB Min

Rejection:
 928MHz: 10dB Min
 930MHz: 20Db Min
 895MHz: 20dB Min
 800~890MHz: 40Db Min
 935~1000MHz: 40Db Min

PWR: 1 W Min
 Connecotr: N-f

Non-Operating Temp: -40C~+70C
 Operating Temp: -40C~+60C
 Rain: UL50 Rain
 Icing: UL50 Type 3R
 Humidity: 5%~95%
 Salt Atmosphere: ASTM B117-600



NOTES:
 1.FINISH:ALL OUT SURFACE OF THE FILTER IS BEING POWDER COATING EXCEPT THE THREAD OF THE CONNECTOR



JQL JQL Electronic Inc
 500 Lake Cook Road, Suite 350
 Deerfield, IL 60015, USA
 Tel : 1(888)236-9828
 Fax: 1(630)823-2902

MATERIAL: _____
 SURFACE TREATMENT: _____
 DESCRIPTION: **Filter**

DWG NO. **FDX9116**

| | NAME | DATE | SCALE: |
|-----------|------|----------|------------|
| DWG BY: | MH | 01.16.12 | 1:1 |
| CHK'D BY: | FW | 01.16.12 | |
| APPVD BY: | CH | 01.16.12 | |

Unit: mm
 TOLERANCE:
 Liner: ±0.1mm
 Angular: ±0.5°

Type Of Projection

A4

WEIGHT: